



# Veterans Strategic Analysis and Research Tool (V-START)

Informing veterans and their public, private, and social sector advocates through data visualization

## OVERVIEW



In 2015, Deloitte and Syracuse University's Institute for Veterans and Military Families (IVMF) partnered to develop the **Veterans Strategic Analysis and Research Tool (V-START)** which helps users **interpret public data to extract key insights** and **inform veteran focused programs and research.**



The tool provides a **user-friendly interface to analyze veteran demographic, educational, and employment** data. Additional proprietary data may be overlaid to help organizations answer unique questions related to service delivery, utilization, efficiency, impact, and more.

## WHAT DOES V-START DO?



**Increases efficiency in answering questions from key stakeholders**



**Provides evidence to support investments and decision making**



**Facilitates data-driven dialogue during in-person forums**



## HOW DOES V-START WORK?

**FOUNDATIONAL TOOL**  
 Dashboards summarizing publicly available data on veterans



**INPUT**  
 Additional data sets to overlay and compare against publicly available data within the foundational tool



**OUTPUT**  
 Visualizations that generate insights to help drive efficient analysis and inform decision making



## WHO CAN USE V-START?



**STATE**

Inform resource allocation and program location decisions, leading to an increased impact on veterans and their families and higher return for taxpayers



**FEDERAL**

Evaluate local support to veterans and identify gaps to improve service delivery and target the greatest needs



**VETERANS**

Explore and compare geographic areas nationwide for future career and educational opportunities



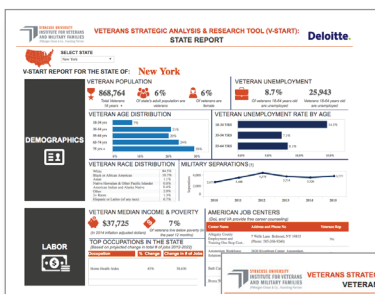
**EMPLOYERS**

Use data to drive veteran recruiting strategy, attract unique skills and top talent in geographic clusters, and improve workplace performance and retention

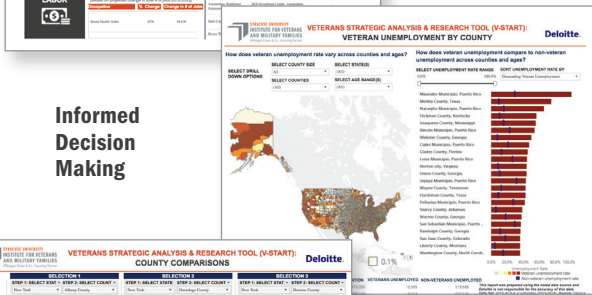


**NONPROFIT INSTITUTIONS**

Manage large data sets and utilize government data to better inform program development and evaluate program effectiveness

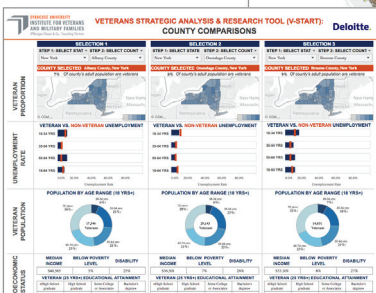


**Customized Analysis**



**Informed Decision Making**

**Efficient Evaluation of Disparate Datasets**



# Veterans Strategic Analysis and Research Tool (V-START)

Measuring and evaluating programs at the IVMF

## HOW CAN V-START BEST SUPPORT PROGRAM EVALUATION?



**ASK KEY EVALUATION QUESTIONS**

- Are programs or initiatives delivered in areas with the highest veteran concentration, need, and greatest potential impact?
- What does the **current intake of veterans** look like compared to funding?
- Who currently **attends** our programs? Where does our target demographic live?
- How can programs be improved?



**LAYER ON ADDITIONAL PROGRAM DATA**

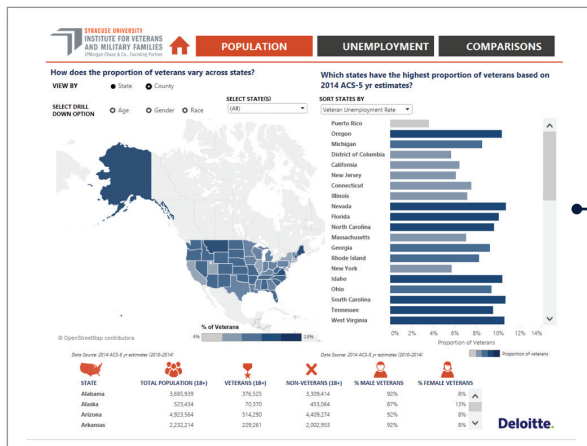
- Service delivery and process data
- Outcomes data
- Target demographic data
- Transition data for service members

## WHERE ARE IVMF PROGRAMS IN RELATION TO THE PROPORTION OF VETERANS?

### FOUNDATIONAL TOOL:

Dashboards summarizing publicly available data on veterans

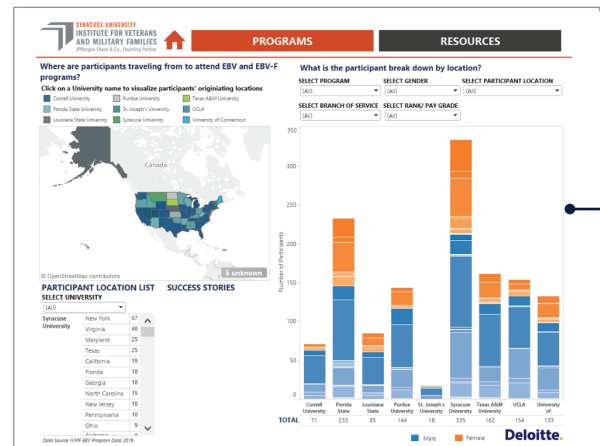
**Which states have the highest proportion of veterans based on 2014 ACS-5 year estimates?**



### INPUT:

Additional data sets to overlay and compare against publicly available data within the foundational tool

**From where are participants traveling to attend IVMF programs?**



## V-START LEADS TO DATA-DRIVEN DECISION MAKING, POTENTIALLY RESULTING IN:



**Cost savings and potential increased ROI**



**Timely program evaluation and analysis**



**Greater impact on and trust among the veteran community**